

A man with curly hair, wearing a dark suit, white shirt, and dark tie, stands outdoors in front of a dense leafy background. He is leaning slightly on a stone wall.

Suits & Tuxedos

**FOR PURCHASE**

JFW

JIM'S FORMAL WEAR

STORE COPY

# WE FIT EVERYONE!



Photo Courtesy of:  
Elizabeth Gelineau Photography  
elizabethgelineau.com



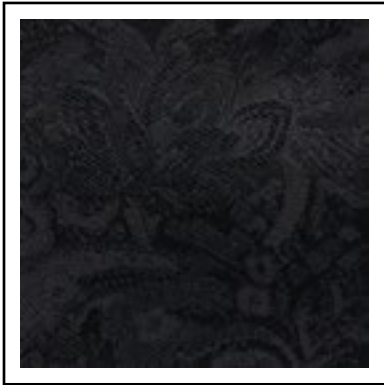
**Purchase Slim Fit Styles to  
fit all shapes and sizes.**



# FABRIC SWATCHES

## ITEMS FOR PURCHASE

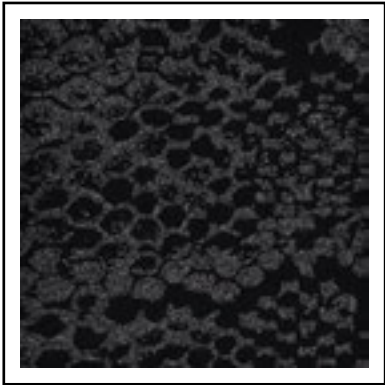
Reference page number for product details



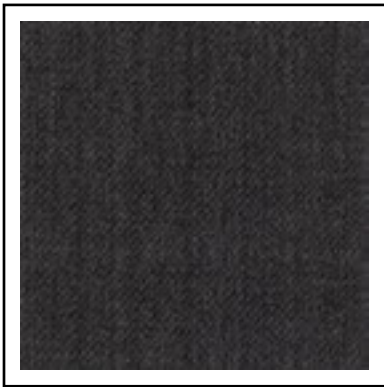
**Color:** Black Paisley    **Style:** N182  
**Page:** 25



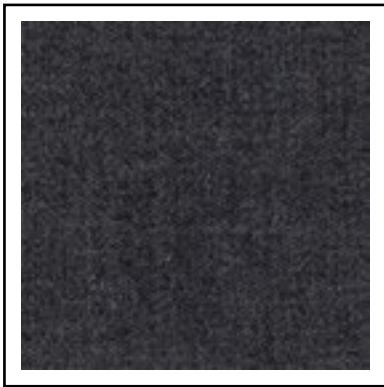
**Color:** Granite Paisley    **Style:** N192  
**Page:** 26



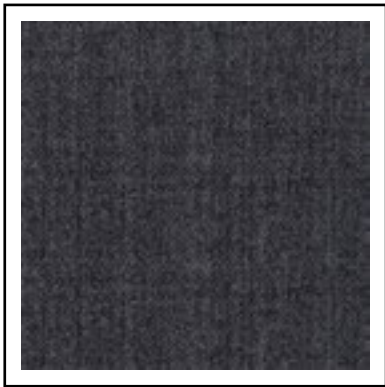
**Color:** Anaconda    **Style:** N8AC  
**Page:** 24



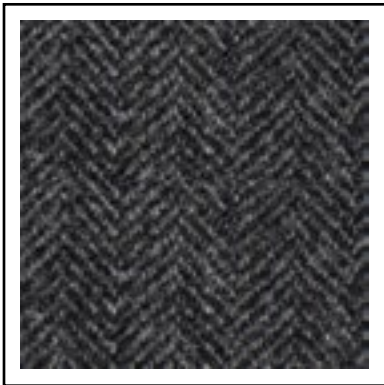
**Color:** Dark Grey    **Style:** N8SC  
**Page:** 17



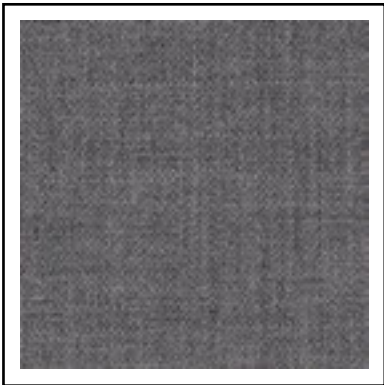
**Color:** Steel Grey    **Style:** N392C  
**Page:** 9



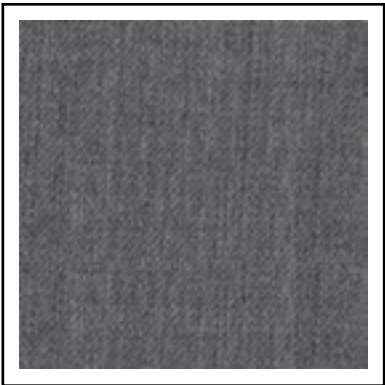
**Color:** Grey    **Style:** N9GC  
**Page:** 12



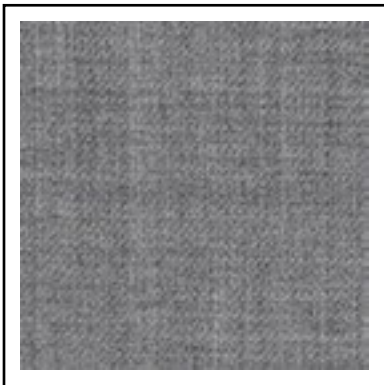
**Color:** Grey Tweed    **Style:** NFTWG  
**Page:** 37



**Color:** Medium Grey    **Style:** N350C  
**Page:** 7



**Color:** Light Grey    **Style:** N8GC  
**Page:** 16



**Color:** Heather Grey    **Style:** N262C  
**Page:** 8

# FABRIC SWATCHES

## ITEMS FOR PURCHASE

Reference page number for product details



**Color:** Navy    **Style:** N372C  
**Page:** 4



**Color:** Dark Indigo    **Style:** N9IC  
**Page:** 13



**Color:** Blue Tweed    **Style:** NFTWB  
**Page:** 37



**Color:** Blue    **Style:** N302C  
**Page:** 5



**Color:** Cobalt Paisley    **Style:** N132  
**Page:** 27



**Color:** Indigo    **Style:** N8IC  
**Page:** 15



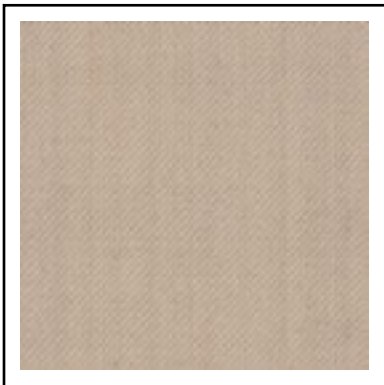
**Color:** Hunter Green    **Style:** NHGC  
**Page:** 23



**Color:** Brown Tweed    **Style:** NFTW  
**Page:** 36



**Color:** Brown    **Style:** N292C  
**Page:** 11



**Color:** Tan    **Style:** N8TC  
**Page:** 18



**Color:** Tan    **Style:** NHTC  
**Page:** 10



**Color:** Apple Red Paisley    **Style:** N122  
**Page:** 28





To RENT see page 23 in the JFW Rental Catalog

MICHAEL KORS

SUPER 130'S  
NAVY  
STERLING  
WEDDING SUIT

SEPARATES  
COLLECTION

Mix and match your coat and pant sizes for the perfect fit.

**Navy Sterling Suit Coat | N372C**  
Slim fit; 2-button; flap pockets; side-vented; mitered sleeves with buttons

**\$329.99**  
Coat Purchase Price

**Navy Sterling Suit Pants | N372P**  
Slim fit; flat front; exact waist; belt loops; buttons to accommodate suspenders

**\$150.00**  
Pant Purchase Price

**Navy Sterling Fullback Vest | NF372**  
4-button; adjustable back; darted pockets

**\$79.99**  
Fullback Vest Purchase Price

**Fabric Content:** Super 130's Wool

**Coat Sizing:**  
Regular: 34-66  
Short: 34-56  
Long: 34-66  
X-Long: 38-56 (even sizes only)

**Pant Sizing:**  
Regular: 28-66  
Short: 28-66  
Long: 28-66 (even sizes only)

**Vest Sizing:**  
RXS - 5XA

Also Shown: Floral Windsor Tie | NWFSE - see page 31



To RENT see page 21 in the JFW Rental Catalog

MICHAEL KORS

BLUE  
PERFORMANCE  
STRETCH  
WEDDING SUIT



SEPARATES  
COLLECTION

Mix and match your coat and pant sizes for the perfect fit.

**Blue Performance Stretch Suit Coat | N302C**  
Slim fit; 2-button; flap pockets; side-vented; mitered sleeves with buttons

**\$329.99**  
Coat Purchase Price

**Blue Performance Stretch Suit Pants | N302P**  
Slim fit; flat front; exact waist; belt loops; buttons to accommodate suspenders

**\$150.00**  
Pant Purchase Price

**Blue Performance Stretch Fullback Vest | NF302**  
4-button; adjustable back; darted pockets

**\$79.99**  
Fullback Vest Purchase Price

**Fabric Content:** CoolMax® / Sorona® / Wool

**Coat Sizing:**  
Regular: 34-66  
Short: 34-56  
Long: 34-66  
X-Long: 38-56 (even sizes only)

**Pant Sizing:**  
Regular: 28-66  
Short: 28-66  
Long: 28-66 (even sizes only)

**Vest Sizing:**  
RXS - 5XA

Also Shown: Floral Windsor Tie | NWFPT - see page 31





RENT  
OR  
BUY  
THIS STYLE

To RENT see page 19 in  
the JFW Rental Catalog

MICHAEL KORS

BLACK  
PERFORMANCE  
STRETCH  
WEDDING SUIT



SEPARATES  
COLLECTION  
Mix and match your coat and pant  
sizes for the perfect fit.



RENT  
OR  
BUY  
THIS STYLE

To RENT see page 20 in  
the JFW Rental Catalog

MICHAEL KORS

MEDIUM GREY  
PERFORMANCE  
STRETCH  
WEDDING SUIT



SEPARATES  
COLLECTION  
Mix and match your coat and pant  
sizes for the perfect fit.

**Black Performance  
Stretch Suit Coat | N421C**  
Slim fit; 2-button; flap pockets; side-  
vented; mitered sleeves with buttons

**\$329.99**  
Coat Purchase Price

**Black Performance Stretch Pants | N921P**  
Slim fit; flat front; exact waist; belt loops;  
buttons to accommodate suspenders

**\$150.00**  
Pant Purchase Price

**Black Performance Stretch  
Fullback Vest | NF921**  
4-button; adjustable back;  
darted pockets

**\$79.99**  
Fullback Vest Purchase Price

Fabric Content: CoolMax® /  
Sorona® / Wool

**Coat Sizing:**  
Regular: 34-66  
Short: 34-56  
Long: 34-66  
X-Long: 38-56  
(even sizes only)

**Pant Sizing:**  
Regular: 28-66  
Short: 28-66  
Long: 28-66  
(even sizes only)

**Vest Sizing:**  
RXS - 5XA

**Medium Grey Performance  
Stretch Suit Coat | N350C**  
Slim fit; 2-button; flap pockets; side-  
vented; mitered sleeves with buttons

**\$329.99**  
Coat Purchase Price

**Medium Grey Performance  
Stretch Suit Pants | N350P**  
Slim fit; flat front; exact waist; belt loops;  
buttons to accommodate suspenders

**\$150.00**  
Pant Purchase Price

**Medium Grey Performance  
Stretch Fullback Vest | NF350**  
4-button; adjustable back;  
darted pockets

**\$79.99**  
Fullback Vest Purchase Price

Fabric Content: CoolMax® /  
Sorona® / Wool

**Coat Sizing:**  
Regular: 34-66  
Short: 34-56  
Long: 34-66  
X-Long: 38-56  
(even sizes only)

**Pant Sizing:**  
Regular: 28-66  
Short: 28-66  
Long: 28-66  
(even sizes only)

**Vest Sizing:**  
RXS - 5XA

Also Shown: Striped Windsor Tie | NWXSE - see page 29

Also Shown: Solid Windsor Tie | NWWFB - see page 33





To RENT see page 32 in the JFW Rental Catalog

ALLURE MEN®

SUPER 130'S  
HEATHER GREY  
CLAYTON SUIT

SEPARATES  
COLLECTION  
Mix and match your coat and pant  
sizes for the perfect fit.



**Heather Grey Clayton Suit Coat | N262C**  
Slim fit; 2-button; flap pockets; side-vented; mitered sleeves with buttons

\$329.99  
Coat Purchase Price

**Heather Grey Clayton Suit Pants | N262P**  
Slim fit; flat front; exact waist; belt loops; buttons to accommodate suspenders

\$150.00  
Pant Purchase Price

**Heather Grey Clayton Fullback Vest | NF262**  
5-button; adjustable back; darted pockets

\$79.99  
Fullback Vest Purchase Price

**Fabric Content:** Super 130's Wool

<b>Coat Sizing:</b>	<b>Pant Sizing:</b>
Regular: 34-66	Regular: 28-66
Short: 34-56	Short: 28-66
Long: 34-66	Long: 28-66
X-Long: 38-56	(even sizes only)

**Vest Sizing:**  
RXS - 5XA

Also Shown: Solid Bow Tie | NBXNA - see page 32



To RENT see page 25 in the JFW Rental Catalog

MICHAEL KORS

SUPER 130'S  
STEEL GREY  
STERLING  
WEDDING SUIT

SEPARATES  
COLLECTION  
Mix and match your coat and pant  
sizes for the perfect fit.



**Steel Grey Sterling Suit Coat | N392C**  
Slim fit; 2-button; flap pockets; side-vented; mitered sleeves with buttons

\$329.99  
Coat Purchase Price

**Steel Grey Sterling Suit Pants | N392P**  
Slim fit; flat front; exact waist; belt loops; buttons to accommodate suspenders

\$150.00  
Pant Purchase Price

**Steel Grey Sterling Fullback Vest | NF392**  
4-button; adjustable back; darted pockets

\$79.99  
Fullback Vest Purchase Price

**Fabric Content:** Super 130's Wool

<b>Coat Sizing:</b>	<b>Pant Sizing:</b>
Regular: 34-66	Regular: 28-66
Short: 34-56	Short: 28-66
Long: 34-66	Long: 28-66
X-Long: 38-56	(even sizes only)

**Vest Sizing:**  
RXS - 5XA

Also Shown: Solid Bow Tie | NBXBL - see page 32



TAN  
SLIM FIT SUIT

**Tan Suit Coat | NHTC**  
Slim fit; 2-button notch; flap pockets;  
side-vented; telescopic sleeves

**\$199.99**  
Coat Purchase Price

**Tan Suit Pants | NHTP**  
Slim fit; flat front; exact elastic  
waist; belt loops

**\$80.00**  
Pant Purchase Price

**Tan Fullback Vest | NFHT**  
4-button; adjustable back; darted  
pockets

**\$59.99**  
Fullback Vest Purchase Price

**Fabric Content:** Poly/Viscose Stretch

<b>Coat Sizing:</b>	<b>Pant Sizing:</b>
Regular: 34-60	Regular: 28-60
Short: 34-50	Long: 28-60
Long: 36-60	(even sizes only)
(even sizes only)	

**Vest Sizing:**  
RXS-R5; LM-L2

**Also Shown:**  
**Striped Windsor Tie | NWXCI**  
see page 29  
**Cognac Brown Oxford | NCXS**  
see page 43

SEPARATES  
COLLECTION

Mix and match your coat and pant  
sizes for the perfect fit.



BROWN ARCHER  
SLIM FIT SUIT

**Brown Archer Suit Coat | N292C**  
Slim fit; 2-button notch; flap pockets;  
side-vented; telescopic sleeves

**\$259.99**  
Coat Purchase Price

**Brown Archer Suit Pants | N292P**  
Slim fit; flat front; exact elastic  
waist; belt loops

**\$115.00**  
Pant Purchase Price

**Brown Archer Fullback Vest | NF292**  
4-button; adjustable back; darted pockets

**\$79.99**  
Fullback Vest Purchase Price

**Fabric Content:** Poly/Wool Stretch

<b>Coat Sizing:</b>	<b>Pant Sizing:</b>
Regular: 34-60	Regular: 28-60
Short: 34-50	Long: 28-60
Long: 36-60	(even sizes only)
(even sizes only)	

**Vest Sizing:**  
RXS-R5; LM-L2

**Also Shown:**  
**Striped Windsor Tie | NWXRW**  
see page 29  
**Cognac Brown Oxford | NCXS**  
see page 43

SEPARATES  
COLLECTION

Mix and match your coat and pant  
sizes for the perfect fit.



SUPER 120’S  
GREY SLIM FIT SUIT

Super 120’s Grey Suit Coat | N9GC

Slim fit; 2-button notch; flap pockets;  
side-vented

\$219.99  
Coat Purchase Price

Super 120’s Grey Suit Pants | N9GP

Slim fit; flat front; exact waist; belt loops;  
buttons to accommodate suspenders

\$90.00  
Pant Purchase Price

Super 120’s Grey Fullback Vest | NF9G

4-button; adjustable back; darted pockets

\$69.99  
Fullback Vest Purchase Price

Fabric Content: Super 120’s Wool

Coat Sizing:	Pant Sizing:
Regular: 34-66	Regular: 28-66
Short: 34-56	Short: 28-66
Long: 34-66	Long: 28-66
X-Long: 38-56 (even sizes only)	(even sizes only)

Vest Sizing:  
RXS - 5XA

Also Shown:  
Floral Bow Tie | NBFDB  
see page 30  
Cognac Oxford Shoes | NCXS  
see page 43

SEPARATES  
COLLECTION

Mix and match your coat and pant  
sizes for the perfect fit.



SUPER 120’S  
DARK INDIGO  
SLIM FIT SUIT

Super 120’s Dark Indigo Suit Coat | N9IC

Slim fit; 2-button notch; flap pockets;  
side-vented

\$219.99  
Coat Purchase Price

Super 120’s Dark Indigo Suit Pants | N9IP

Slim fit; flat front; exact waist; belt loops;  
buttons to accommodate suspenders

\$90.00  
Pant Purchase Price

Super 120’s Dark Indigo Fullback Vest | NF9I

4-button; adjustable back; darted pockets

\$69.99  
Fullback Vest Purchase Price

Fabric Content: Super 120’s Wool

Coat Sizing:	Pant Sizing:
Regular: 34-66	Regular: 28-66
Short: 34-56	Short: 28-66
Long: 34-66	Long: 28-66
X-Long: 38-56 (even sizes only)	(even sizes only)

Vest Sizing:  
RXS - 5XA

Also Shown:  
Floral Windsor Tie | NWFSL  
see page 31

SEPARATES  
COLLECTION

Mix and match your coat and pant  
sizes for the perfect fit.



SUPER 120’S  
BLACK SLIM FIT SUIT

Super 120’s Black Suit Coat | N9BC

Slim fit; 2-button notch; flap pockets;  
side-vented

\$219.99  
Coat Purchase Price

Super 120’s Black Suit Pants | N9BP

Slim fit; flat front; exact waist; belt loops;  
buttons to accommodate suspenders

\$90.00  
Pant Purchase Price

Super 120’s Black Fullback Vest | NF9B

4-button; adjustable back; darted pockets

\$69.99  
Fullback Vest Purchase Price

Fabric Content: Super 120’s Wool

Coat Sizing:	Pant Sizing:
Regular: 34-66	Regular: 28-66
Short: 34-56	Short: 28-66
Long: 34-66	Long: 28-66
X-Long: 38-56 (even sizes only)	Long: 28-66 (even sizes only)

Vest Sizing:  
RXS - 5XA

Also Shown:  
Solid Windsor Tie | NWWBL  
see page 33

SEPARATES  
COLLECTION

Mix and match your coat and pant  
sizes for the perfect fit.



INDIGO  
SLIM FIT SUIT

Indigo Suit Coat | N8IC

Slim fit; 2-button notch; flap pockets;  
side-vented

\$184.99  
Coat Purchase Price

Indigo Suit Pants | N8IP

Slim fit; flat front; exact waist; belt loops;  
buttons to accommodate suspenders

\$85.00  
Pant Purchase Price

Indigo Fullback Vest | NF8I

4-button; adjustable back; darted pockets

\$59.99  
Fullback Vest Purchase Price

Fabric Content: Premium Wool Blend

Coat Sizing:	Pant Sizing:
Regular: 34-66	Regular: 28-66
Short: 34-56	Short: 28-66
Long: 34-66	Long: 28-66
X-Long: 38-56 (even sizes only)	Long: 28-66 (even sizes only)

Vest Sizing:  
RXS - 5XA

Also Shown:  
Floral Bow Tie | NBFBH  
see page 30  
Cognac Oxford Shoes | NCXS  
see page 43

SEPARATES  
COLLECTION

Mix and match your coat and pant  
sizes for the perfect fit.



LIGHT GREY  
SLIM FIT SUIT

**Light Grey Suit Coat | N8GC**  
Slim fit; 2-button notch; flap pockets;  
side-vented

**\$184.99**  
Coat Purchase Price

**Light Grey Suit Pants | N8GP**  
Slim fit; flat front; exact waist; belt loops;  
buttons to accommodate suspenders

**\$85.00**  
Pant Purchase Price

**Light Grey Fullback Vest | NF8G**  
4-button; adjustable back; darted pockets

**\$59.99**  
Fullback Vest Purchase Price

**Fabric Content:** Premium Wool Blend

<b>Coat Sizing:</b>	<b>Pant Sizing:</b>
Regular: 34-66	Regular: 28-66
Short: 34-56	Short: 28-66
Long: 34-66	Long: 28-66
X-Long: 38-56	(even sizes only)
(even sizes only)	

**Vest Sizing:**  
RXS - 5XA

**Also Shown:**  
**Solid Windsor Tie | NWWSI**  
see page 33

**SEPARATES  
COLLECTION**

Mix and match your coat and pant  
sizes for the perfect fit.



DARK GREY  
SLIM FIT SUIT

**Dark Grey Suit Coat | N8SC**  
Slim fit; 2-button notch; flap pockets;  
side-vented

**\$184.99**  
Coat Purchase Price

**Dark Grey Suit Pants | N8SP**  
Slim fit; flat front; exact waist; belt loops;  
buttons to accommodate suspenders

**\$85.00**  
Pant Purchase Price

**Dark Grey Fullback Vest | NF8S**  
4-button; adjustable back; darted pockets

**\$59.99**  
Fullback Vest Purchase Price

**Fabric Content:** Premium Wool Blend

<b>Coat Sizing:</b>	<b>Pant Sizing:</b>
Regular: 34-66	Regular: 28-66
Short: 34-56	Short: 28-66
Long: 34-66	Long: 28-66
X-Long: 38-56	(even sizes only)
(even sizes only)	

**Vest Sizing:**  
RXS - 5XA

**Also Shown:**  
**Floral Windsor Tie | NWFNA**  
see page 31

**SEPARATES  
COLLECTION**

Mix and match your coat and pant  
sizes for the perfect fit.



TAN  
SLIM FIT SUIT

**Tan Suit Coat | N8TC**  
Slim fit; 2-button notch; flap pockets;  
side-vented

\$184.99  
Coat Purchase Price

**Tan Suit Pants | N8TP**  
Slim fit; flat front; exact waist; belt loops;  
buttons to accommodate suspenders

\$85.00  
Pant Purchase Price

**Tan Fullback Vest | NF8T**  
4-button; adjustable back; darted pockets

\$59.99  
Fullback Vest Purchase Price

**Fabric Content:** Premium Wool Blend

<b>Coat Sizing:</b>	<b>Pant Sizing:</b>
Regular: 34-66	Regular: 28-66
Short: 34-56	Short: 28-66
Long: 34-66	Long: 28-66
X-Long: 38-56	(even sizes only)
(even sizes only)	

**Vest Sizing:**  
RXS - 5XA

**Also Shown:**  
**Floral Windsor Tie | NWFCP**  
see page 31

SEPARATES  
COLLECTION  
Mix and match your coat and pant  
sizes for the perfect fit.



BLACK  
SLIM FIT SUIT

**Black Suit Coat | N8BC**  
Slim fit; 2-button notch; flap pockets;  
side-vented

\$184.99  
Coat Purchase Price

**Black Suit Pants | N8BP**  
Slim fit; flat front; exact waist; belt loops;  
buttons to accommodate suspenders

\$85.00  
Pant Purchase Price

**Black Fullback Vest | NF8B**  
4-button; adjustable back; darted pockets

\$59.99  
Fullback Vest Purchase Price

**Fabric Content:** Premium Wool Blend

<b>Coat Sizing:</b>	<b>Pant Sizing:</b>
Regular: 34-66	Regular: 28-66
Short: 34-56	Short: 28-66
Long: 34-66	Long: 28-66
X-Long: 38-56	(even sizes only)
(even sizes only)	

**Vest Sizing:**  
RXS - 5XA

**Also Shown:**  
**Floral Bow Tie | NBFWI**  
see page 30

SEPARATES  
COLLECTION  
Mix and match your coat and pant  
sizes for the perfect fit.



SUPER 120’S  
BLACK 2-BUTTON  
SLIM FIT TUXEDO

Super 120’s Tuxedo Coat | N19C  
Slim fit; 2-button; notch lapel; side-vented

\$279.99  
Coat Purchase Price

Super 120’s Tuxedo Pants | N19P  
Slim fit; flat front; exact waist; buttons to  
accommodate suspenders; satin leg piping

\$90.00  
Pant Purchase Price

Fabric Content: Super 120’s Wool

Coat Sizing:	Pant Sizing:
Regular: 34-66	Regular: 28-66
Short: 34-56	Short: 28-66
Long: 34-66	Long: 28-66
X-Long: 38-56	(even sizes only)
(even sizes only)	

Also Shown:  
Black Satin Bow Tie | RBBT  
see page 44  
Black Fullback Vest | NFBS  
see page 35  
Black Allegro Shoes | NBAS  
see page 43

SEPARATES  
COLLECTION

Mix and match your coat and pant  
sizes for the perfect fit.



BLACK 1-BUTTON  
SLIM FIT TUXEDO

Slim Fit Tuxedo Coat | N18C  
Slim fit; 1-button; peak lapel;  
side-vented

\$229.99  
Coat Purchase Price

Wool Blend Tuxedo Pants | N18P  
Slim fit; flat front; exact waist;  
buttons to accommodate  
suspenders; satin leg piping

\$85.00  
Pant Purchase Price

Fabric Content: Premium Wool Blend

Coat Sizing:	Pant Sizing:
Regular: 34-66	Regular: 28-66
Short: 34-56	Short: 28-66
Long: 34-66	Long: 28-66
X-Long: 38-56	(even sizes only)
(even sizes only)	

Also Shown:  
Black Satin Bow Tie | RBBT  
see page 44

SEPARATES  
COLLECTION

Mix and match your coat and pant  
sizes for the perfect fit.



WHITE CLASSIC DINNER JACKET



**White Classic Dinner Jacket | N70**  
Slim fit; 1-button; shawl lapel;  
center-vented; flap pockets

**\$199.99**  
Coat Purchase Price

**Super 120's Tuxedo Pants | N19P**  
Slim fit; flat front; exact waist;  
buttons to accommodate  
suspenders; satin leg piping

**\$90.00**  
Pant Purchase Price

**Wool Blend Tuxedo Pants | N18P**  
Slim fit; flat front; exact waist;  
buttons to accommodate  
suspenders; satin leg piping

**\$85.00**  
Pant Purchase Price

**Fabric Content:** Polyester

<b>Coat Sizing:</b>	<b>Pant Sizing:</b>
Regular: 34-60	Regular: 28-66
Short: 34-52	Short: 28-66
Long: 36-60	Long: 28-66
(even sizes only)	(even sizes only)

IVORY CLASSIC DINNER JACKET



**Ivory Classic Dinner Jacket | N601C**  
Slim fit; 1-button; shawl lapel; side-  
vented; double besom pockets

**\$199.99**  
Coat Purchase Price

**Super 120's Tuxedo Pants | N19P**  
Slim fit; flat front; exact waist;  
buttons to accommodate  
suspenders; satin leg piping

**\$90.00**  
Pant Purchase Price

**Wool Blend Tuxedo Pants | N18P**  
Slim fit; flat front; exact waist;  
buttons to accommodate  
suspenders; satin leg piping

**\$85.00**  
Pant Purchase Price

**Fabric Content:** Polyester

<b>Coat Sizing:</b>	<b>Pant Sizing:</b>
Regular: 34-60	Regular: 28-66
Short: 34-60	Short: 28-66
Long: 34-60	Long: 28-66
X-Long: 38-50	(even sizes only)



COUTURE  
— 1 9 1 0 —

HUNTER GREEN  
SLIM FIT SUIT

**Hunter Green Suit Coat | NHGC**  
Slim fit; 2-button notch; flap pockets;  
side-vented; telescopic sleeves

**\$199.99**  
Coat Purchase Price

**Hunter Green Suit Pants | NHGP**  
Slim fit; flat front; exact elastic  
waist; belt loops

**\$80.00**  
Pant Purchase Price

**Hunter Green Fullback Vest | NFHG**  
4-button; adjustable back; darted  
pockets

**\$59.99**  
Fullback Vest Purchase Price

**Fabric Content:** Poly/Viscose Blend

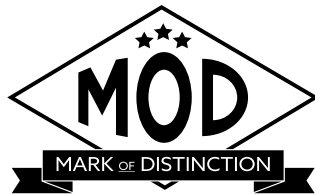
<b>Coat Sizing:</b>	<b>Pant Sizing:</b>
Regular: 34-60	Regular: 28-60
Short: 34-50	Long: 28-60
Long: 36-60	(even sizes only)
(even sizes only)	

**Vest Sizing:**  
RXS-R5; LM-L2

**Also Shown:**  
**Floral Windsor Tie | NWFRS**  
see page 31  
**Black Oxford Shoe | NBXS**  
see page 43

**SEPARATES  
COLLECTION**  
Mix and match your coat and pant  
sizes for the perfect fit.





ANACONDA  
SNAKESKIN  
SLIM FIT TUXEDO

**Anaconda Snakeskin Tuxedo Coat | N8AC**  
Slim fit; 2-button w/black satin notch lapel;  
flap pockets; side-vented

**\$199.99**  
Coat Purchase Price

**Euro Slim Stretch Suit Pants | N11P**  
Euro Slim Fit; flat front; exact waist;  
belt loops

**\$80.00**  
Pant Purchase Price

**Coat Fabric Content:** Poly/Elastine Blend  
**Pant Fabric Content:** Poly/Knit Blend

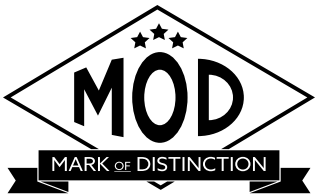
<b>Coat Sizing:</b>	<b>Pant Sizing:</b>
Regular: 34-50	Men's: 28-44
Short: 34-50	Boys': 26-28
Long: 36-50	(even sizes only)
Boys': 14-18	
(even sizes only)	

**Also Shown:**  
**Solid Windsor Tie | NWWBL**  
see page 33  
**Black Velvet Loafers | NBLVS**  
see page 42



RENT  
OR  
BUY  
THIS STYLE

To RENT see page 39 in  
the JFW Rental Catalog



BLACK  
ARIES PAISLEY  
SLIM FIT TUXEDO

**Black Aries Paisley Tuxedo Coat | N182**  
Slim fit; 1-button w/black shawl lapel;  
double-besom pockets; side-vented

**\$199.99**  
Coat Purchase Price

**Euro Slim Stretch Suit Pants | N11P**  
Euro Slim Fit; flat front; exact waist;  
belt loops

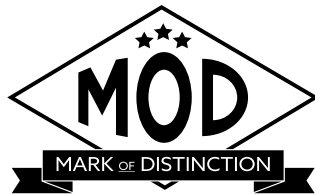
**\$80.00**  
Pant Purchase Price

**Coat Fabric Content:** 100% Polyester  
**Pant Fabric Content:** Poly/Knit Blend

<b>Coat Sizing:</b>	<b>Pant Sizing:</b>
Regular: 34-66	Men's: 28-44
Short: 34-56	Boys': 26-28
Long: 36-66	(even sizes only)
Boys': 14-18	
(even sizes only)	

**Also Shown:**  
**Satin Pre-Tied Bow Tie | RBBT**  
see page 44  
**Black Sparkle Shoes | NBSKS**  
see page 42





GRANITE  
ARIES PAISLEY  
SLIM FIT TUXEDO

Granite Aries Paisley Tuxedo Coat | N192  
Slim fit; 1-button w/black shawl lapel;  
double-besom pockets; side-vented

\$199.99  
Coat Purchase Price

Euro Slim Stretch Suit Pants | N11P  
Euro Slim Fit; flat front; exact waist;  
belt loops

\$80.00  
Pant Purchase Price

Coat Fabric Content: 100% Polyester  
Pant Fabric Content: Poly/Knit Blend

Coat Sizing:	Pant Sizing:
Regular: 34-66	Men's: 28-44
Short: 34-56	Boys': 26-28
Long: 34-66	(even sizes only)
X-Long: 38-56	
Boys': 14-18	
(even sizes only)	

Also Shown:  
Satin Pre-Tied Bow Tie | RBBT  
see page 44  
Charcoal Subtle Sparkle Shoe | NCS5S  
see page 42



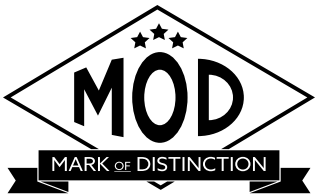
RENT  
OR  
BUY  
THIS STYLE

To RENT see page 38 in  
the JFW Rental Catalog



RENT  
OR  
BUY  
THIS STYLE

To RENT see page 40 in  
the JFW Rental Catalog



COBALT  
ARIES PAISLEY  
SLIM FIT TUXEDO

Cobalt Aries Paisley Tuxedo Coat | N132  
Slim fit; 1-button w/black shawl lapel;  
double-besom pockets; side-vented

\$199.99  
Coat Purchase Price

Euro Slim Stretch Suit Pants | N11P  
Euro Slim Fit; flat front; exact waist;  
belt loops

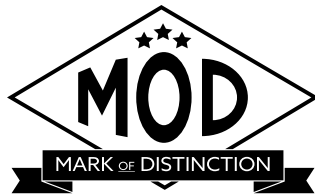
\$80.00  
Pant Purchase Price

Coat Fabric Content: 100% Polyester  
Pant Fabric Content: Poly/Knit Blend

Coat Sizing:	Pant Sizing:
Regular: 34-50	Men's: 28-44
Short: 34-50	Boys': 26-28
Long: 34-50	(even sizes only)
X-Long: 38-50	
Boys': 14-18	
(even sizes only)	

Also Shown:  
Satin Pre-Tied Bow Tie | RBBT  
see page 44  
Black Velvet Loafers | NBLVS  
see page 42





APPLE RED  
ARIES PAISLEY  
SLIM FIT TUXEDO

**Apple Red Aries Paisley Tuxedo Coat | N122**  
Slim fit; 1-button w/black shawl lapel;  
double-besom pockets; side-vented

**\$199.99**  
Coat Purchase Price

**Euro Slim Stretch Suit Pants | N11P**  
Euro Slim Fit; flat front; exact waist;  
belt loops

**\$80.00**  
Pant Purchase Price

**Coat Fabric Content:** 100% Polyester  
**Pant Fabric Content:** Poly/Knit Blend

<b>Coat Sizing:</b>	<b>Pant Sizing:</b>
Regular: 34-50	Men's: 28-44
Short: 34-50	Boys': 26-28
Long: 34-50	(even sizes only)
X-Long: 38-50	
Boys': 14-18	
(even sizes only)	

**Also Shown:**  
**Satin Pre-Tied Bow Tie | RBBT**  
see page 44  
**Charcoal Subtle Sparkle Shoes | NCSSS**  
see page 42



**RENT  
OR  
BUY**  
THIS STYLE

To RENT see page 37 in  
the JFW Rental Catalog

**RENT  
OR  
BUY**  
THESE STYLES

**MICHAEL KORS**  
**STRIPED WINDSOR TIES**  
Striped Self-Tie Windsor Ties

**\$39.99**  
Striped Windsor Ties for Purchase

Available in men's regular and long  
sizes only. Boys' sizes not available.  
Rental styles are pre-tied.



Black | NWXBL



Charcoal | NWXCA



Silver | NWXSI



Platinum | NWXPT



White | NWXWH



Ivory | NWXIV



Champagne | NWXCP



Gold | NWXGO



Blush | NWXBH



Ballet | NWXBA



Pink Rose Gold | NWXPR



Quartz | NWXQZ



First Blush | NWXFB



Rose Gold | NWXRS



Taupe | NWXTP



Spice | NWXSC



Cinnamon | NWXCI



Rosewood | NWXRW



Wine | NWXWI



Apple Red | NWXAR



Plum | NWXPL



Navy | NWXNA



Slate Blue | NWXSL



Dusty Blue | NWXDB



Sage | NWXSE



Evergreen/Moss | NWXEV



Forest | NWXFO



Hunter Green | NWXHG





# MICHAEL KORS FLORAL BOW TIES

Pre-Tied Bow Ties

**\$34.99**  
Floral Bow Ties for Purchase

Available in men's sizes only.  
Boys' sizes not available for purchase.



Black | NBFBL



Ivory | NBFIV



Champagne | NBFCP



Rose Gold | NBFRR



Blush | NBFBR



Dusty Coral | NBFCD



Mauve | NBFMR



Apple Red | NBFAR



Wine | NBFWR



Sky Blue | NBFSL



Lite Blue | NBFLL



Dusty Blue | NBFDB



Royal Blue | NBFRO



Slate Blue | NBFSL



Navy | NBFNA



Dark Green | NBFDR



Emerald | NBFEM



Sage | NBFSE



# MICHAEL KORS FLORAL WINDSOR TIES

Floral Patterned Self-Tie Windsor Ties

**\$39.99**  
Floral Windsor Ties for Purchase

Available in men's regular and long  
sizes only. Boys' sizes not available.  
Rental styles are pre-tied.



Black | NWFBL



Platinum | NWFPT



White | NWFWR



Ivory | NWFIV



Champagne | NWFCD



Biscotti | NWFBR



Rose Gold | NWFRR



Bellini | NWFBE



Dark Coral | NWFDC



Dusty Coral | NWFCD



Blush | NWFBR



Mauve | NWFMR



Apple Red | NWFAR



Wine | NWFWR



Cranberry | NWFCE



Plum | NWFPL



Dusty Lavender | NWFDL



Lavender | NWFLL



Lite Blue | NWFLL



Dusty Blue | NWFDB



Slate Blue | NWFSL



Navy | NWFNA



Dark Green | NWFDR



Emerald | NWFEM



Sage | NWFSE





# MICHAEL KORS SOLID BOW TIES

Pre-Tied Bow Ties

\$34.99  
Solid Bow Ties for Purchase

Available in men's sizes only. Boys' sizes not available for purchase.



Black | NBXBL



White | NBXWH



Ivory | NBXIV



Champagne | NBXCP



Blush | NBXBH



First Blush | NBXFB



Ballet | NBXBA



Rose Petal | NBXRP



Ferrari Red | NBXFR



Apple Red | NBXAR



Wine | NBXWI



Plum | NBXPL



Navy | NBXNA



Royal Blue | NBXRO



Slate Blue | NBXSL



# MICHAEL KORS SOLID WINDSOR TIES

Solid Self-Tie Windsor Ties

\$39.99  
Solid Windsor Ties for Purchase

Available in men's regular and long sizes only. Boys' sizes not available. Rental styles are pre-tied.



Black | NWWBL



Charcoal | NWWCA



Silver | NWWSI



Platinum | NWWPT



Ivory | NWWIV



Champagne | NWWCP



Nude | NWWNU



Blush | NWWBH



First Blush | NWWFB



Ballet | NWWBA



Rose Petal | NWWRP



Coral | NWWCO



Ferrari Red | NWWFR



Apple Red | NWWAR



Wine | NWWWI



Plum | NWWPL



Navy | NWWNA



Royal | NWWRO



Slate Blue | NWWSL



Teal | NWWTE



MICROFIBER SHIRTS



Microfiber Shirts  
white-N76W; black-N76B; ivory-N76I  
plain front; laydown collar

\$54.99  
Microfiber Shirts for Purchase

MICROFIBER  
FITTED SHIRTS



Microfiber Fitted Shirts  
white-N96W; black-N96B; ivory-N96I  
tapered fit; plain front; laydown collar

\$54.99  
Microfiber Fitted Shirts for Purchase

BLACK  
FULLBACK VEST



Black Fullback Vest | NFBS  
satin; four button front; adjustable back

\$79.99  
Black Fullback Vest for Purchase

EURO SLIM  
STRETCH PANTS



Euro Slim Stretch Suit Pants | N11P  
Euro Slim Fit; flat front;  
exact waist; belt loops

\$80.00  
Euro Style Suit Pants for Purchase

**Pant Sizing:**  
Men's: 28-44  
Boys': 26-28  
(even sizes only)

CLASSIC SHIRTS



1/4" Pleated Shirt | N85W  
white; 65/35 blend; wing collar



1/4" Pleated Shirt | N86W  
white; 65/35 blend; laydown collar

\$39.99  
Classic Shirts for Purchase

SIZING FOR MEN'S FULLBACK VEST										
	Regular Sizes							Long Sizes - 6' 2" and over		
	Small	Medium	Large	X-Large	2X-Large	3X-Large	4X-Large	Medium	Large	X-Large
Coat Size Range	36-38	39-42	43-45	46-48	50-54	56-58	60-62	39-42	43-45	46-48
Vest Size Code	RS	RM	RL	RX	R2	R3	R4	LM	LL	LX



BROWN TWEED  
FULLBACK VEST

**Brown Tweed Fullback Vest | NFTW**  
Wool; four button front; adjustable back;  
men's sizes available; boys' sizes available  
in backless styling

\$79.99

Tweed Vest Purchase Price

**Fabric Content:** 100% Wool

**Vest Sizing:**  
see page 37

**Also Shown:**  
**Solid Windsor Tie | NWWIV**  
see page 33  
**Tan Suit Pants | N8TP**  
see page 18



BLUE TWEED FULLBACK VEST



**Blue Tweed Fullback Vest | NFTWB**  
Wool; four button front; adjustable back; men's sizes  
available; boys' sizes available in backless styling

\$79.99

Tweed Vest Purchase Price

**Fabric Content:** 100% Wool

**Also Shown:**  
**Solid Windsor Tie | NWWSL** - see page 33  
**Light Grey Suit Pants | N8GP** - see page 16

GREY TWEED FULLBACK VEST



**Grey Tweed Fullback Vest | NFTWG**  
Wool; four button front; adjustable back; men's sizes  
available; boys' sizes available in backless styling

\$79.99

Tweed Vest Purchase Price

**Fabric Content:** 100% Wool

**Also Shown:**  
**Solid Windsor Tie | NWWWI** - see page 33  
**Black Suit Pants | N8BP** - see page 19

	BOYS' BACKLESS VEST			MEN'S FULLBACK VEST													MEN'S BACKLESS VEST
				Regular Sizes							Long Sizes - 6' 2" and over						
	Small	Medium	Large	X-Small	Small	Medium	Large	X-Large	2X-Large	3X-Large	Small	Medium	Large	X-Large	2X-Large	3X-Large	
Coat Size Range	3 - 6	7 - 12	14 - 16	18B - 35	36 - 38	39 - 42	43 - 45	46 - 48	50 - 54	56 - 58	36-38	39 - 42	43 - 45	46 - 48	50 - 54	56 - 58	60 - 70
Vest Size Code	BS	BM	BL	RXS	RS	RM	RL	RX	R2	R3	LS	LM	LL	LX	L2	L3	5XA



TODDLER TUX



**Toddler Tux | TXB**  
includes coat, pant, shirt, fullback vest and tie

**Fabric Content:** Polyester

**Toddler Tux Sizing:**

Size:	Fits:	Chest:	Waist:	Outseam:
01	12-18 mos.	19"	18-21"	18"
02	2T	21"	19-22"	19.5"
03	3T	23"	20-23"	21.5"

**\$89.99**  
Toddler Tux for Purchase

TODDLER SUITS



**Navy Toddler Nested Suit | NSTN**  
2-button notch, elastic back pants, adjustable vest; white plain front shirt; windsor tie; 100% polyester



**Black Toddler  
Nested Suit | NSTB**

2-button notch, elastic back pants, adjustable vest; white plain front shirt; windsor tie; 100% polyester



**Grey Toddler  
Nested Suit | NSTG**

2-button notch, elastic back pants, adjustable vest; white plain front shirt; windsor tie; 100% polyester



**Tan Toddler  
Nested Suit | NSTT**

2-button notch, elastic back pants, adjustable vest; white plain front shirt; windsor tie; 100% polyester

**Sizing for all Toddler Nested Suits:**

Size:	Fits:	Chest:	Waist:	Outseam:
01	12-18 mos.	19"	18-21"	18"
02	2T	21"	19-22"	19.5"
03	3T	23"	20-23"	21.5"

**\$99.99**  
Toddler Nested Suits for Purchase

TODDLER PANT SETS



**Tan Toddler Pant Set | NPTT**  
includes elastic back pants, ivory shirt; solid bow tie; suspenders; 100% polyester



**Black Toddler  
Pant Set | NPTB**

includes elastic back pants, plain front white shirt; solid bow tie; suspenders; 100% polyester



**Grey Toddler  
Pant Set | NPTG**

includes elastic back pants, plain front white shirt; solid bow tie; suspenders; 100% polyester



**Navy Toddler  
Pant Set | NPTN**

includes elastic back pants, plain front white shirt; solid bow tie; suspenders; 100% polyester

**Sizing for all Toddler Pant Sets:**

Size:	Fits:	Chest:	Waist:	Outseam:
01	12-18 mos.	19"	18-21"	18"
02	2T	21"	19-22"	19.5"
03	3T	23"	20-23"	21.5"

**\$89.99**  
Toddler Pant Sets for Purchase



PATTERNED FORMAL SOCKS



Dark Grey Argyle XPDG    Light Pink Argyle XPPK    Wine Grey Argyle XPWG    Regency Argyle XPRG    Navy Grey Argyle XPNG

Heather Navy Argyle XPHN    Navy Argyle XPNA    Teal Argyle XPTE    Mint Argyle XPMN

Grey Mustache XPMGY    Royal Mustache XPMRO    Wine Beeline Optical XPBWI    Blue Beeline Optical XPBNA

Blue Line Dot XPLNA    Purple Line Dot XPLPU    Coral Line Dot XPLCO

\$17.00  
Patterned Formal Socks for Purchase



Statement Sockwear makes a statement in quality, colors, patterns and, most importantly, makes a difference in this world with every single purchase.  
Through our partnership with 20 Liters, each pair of Statement Sockwear provides 100 days of clean drinking water for 1 person in Africa.

COLORFUL FORMAL SOCKS



Royal XSRO    Purple XSVA

Wine XSWI    Apple Red XSAR

Ferrari Red XSFR    Coral XSOC

Petal Pink XSPK

\$17.00  
Colorful Formal Socks for Purchase



BASIC FORMAL SOCKS



Black XBLK    White XWHT

Ivory XIVY    Brown XBRN

\$7.00  
Basic Formal Socks for Purchase



PREMIUM  
SUIT SHOES



Brown Burnished  
Toe Suit Shoes | NBPT



Brown Monk Strap, Burnished  
Toe Suit Shoes | NMSB

\$84.99

Premium Suit Shoes for Purchase

MEN'S SHOE SIZING		
Styles	Medium Sizes	Wide Sizes
NBPT*	7-16	N/A
NMSB*	7-16	N/A
NBSKS*	7 - 14	N/A
NSSKS*	7 - 14	N/A
NGSKS*	7 - 14	N/A
NBSSS*	7, 8-14	N/A
NCSSS*	7, 8-14	N/A
N3SSS*	7, 8-14	N/A
NBLVS*	7, 8-14	N/A
N3SL*	7-14	N/A
NRSL*	7-14	N/A

\* Half sizes stop at 11.5 + Half sizes stop at 10.5

FASHION  
SHOES



Black Sparkle  
Shoes | NBSKS



Gold Sparkle  
Shoes | NGSKS



Charcoal Subtle Sparkle  
Shoes | NCSSS



Black Velvet  
Loafers | NBLVS



Red Suede  
Loafers | NRSL



Silver Sparkle  
Shoes | NSSKS



Black Subtle Sparkle  
Shoes | NBSSS



Blue Subtle Sparkle  
Shoes | N3SSS



Blue Suede  
Loafers | N3SL

\$79.99

Fashion Shoes for Purchase

RENT OR BUY  
FORMAL SHOES

To RENT see the JFW Accessory Catalog



Black Allegro  
Shoes | NBAS



Black Oxford  
Shoes | NBXS



Cognac Brown Oxford  
Shoes | NCXS



Chestnut Plain Toe  
Oxford Shoes | NCOP

\$79.99

Formal Shoes for Purchase

BASIC  
SUIT SHOES



Black Suit  
Shoes | NBLS



Brown Suit  
Shoes | NBRBS

\$74.99

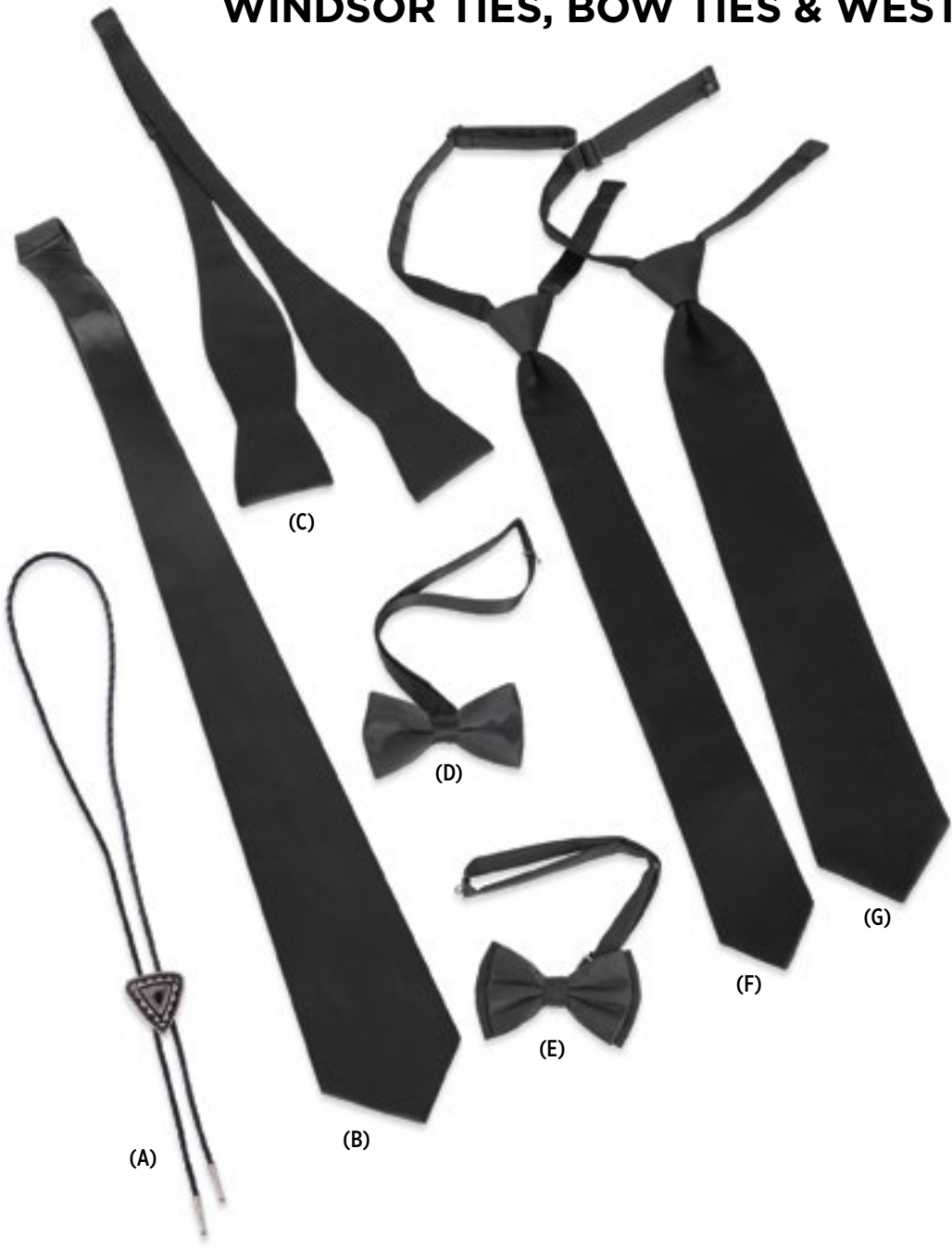
Basic Suit Shoes for Purchase

MEN'S SHOE SIZING		
Styles	Medium Sizes	Wide Sizes
NBAS*	6 - 18	7 - 18
NBXS*	6 - 18	7 - 18
NCXS*	6 - 18	7 - 18
NCOP*	6 - 18	7 - 18
NBLS*	6.5-16	7 - 16
NBRBS*	6.5-16	7 - 16

\* Half sizes stop at 11.5 + Half sizes stop at 10.5



WINDSOR TIES, BOW TIES & WESTERN BOLO TIE



- (A)  
Men's Western Bolo Tie  
Black & Silver | NBOLA

**\$27.99**  
Men's Western Bolo Tie  
for Purchase
- (B)  
Michael Kors  
Self-Tie Windsor Tie  
Black | NWWBL

**\$39.99**  
Michael Kors Self-Tie Windsor Tie  
for Purchase
- (C)  
Satin Self-Tie Bow Tie  
Black | RBST

**\$29.99**  
Satin Self-Tie Bow Tie  
for Purchase
- (D)  
Satin Pre-Tied Bow Tie  
Black | RBBT  
boxed

**\$19.99**  
Satin Pre-Tied Bow Tie  
for Purchase
- (E)  
Faille Pre-Tied Bow Tie  
Black | NB990  
available in men's sizes only

**\$29.99**  
Faille Pre-Tied Bow Tie  
for Purchase
- (F)  
Satin Pre-Tied  
Skinny Windsor Tie  
Black | NFSBL

**\$24.99**  
Satin Pre-Tied Skinny Windsor Tie  
for Purchase
- (G)  
Satin Pre-Tied  
Windsor Tie  
Black | NFBLK

**\$24.99**  
Satin Pre-Tied Windsor Tie  
for Purchase

CUMMERBUND & TIE SETS



- (H)  
Satin Tie and  
Cummerbund Boxed Sets  
Black | BPPP  
Red | RPPP

**\$25.99**  
Satin Tie and Cummerbund  
Boxed Sets for Purchase

REVERSIBLE BELTS



- (I)  
Black/Brown  
Reversible Belt | NBLT

**\$24.00**  
Black/Brown Reversible  
Belt for Purchase

Sizing for  
Reversible Belts:

Waist:	Size:
21-24	XS
25-28	S
29-32	M
33-36	L
37-40	XL
41-44	2X
45-48	3X



SUSPENDERS

- Button-On Suspenders  
(J) Black | BOSB  
(K) White | BOSW
- \$20.00**  
Button-On Suspenders for Purchase

FORMAL JEWELRY

- Knot Cufflink & Stud Set  
(L) Gold | JBGB  
(M) Silver | JBSB
- \$44.99**  
Knot Cufflink & Stud Sets for Purchase



FORMAL GLOVES



- (N)  
Formal Gloves | GLOW  
white
- \$9.99**  
White Formal Gloves for Purchase



NOVELTY SUSPENDERS



MATCHES COAT STYLES



Color **Steel Grey** Suspender **SS392**  
(Matches styles 392 & 391)



Color **Medium Grey** Suspender **SS322**  
(Matches style 350)



Color **Heather Grey** Suspender **SS262**  
(Matches styles 262 & 362)

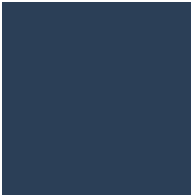
\$20.00  
Novelty Suspenders for Purchase



Color **Tan** Suspender **SS252**  
(Matches style 252)



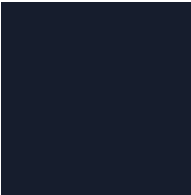
Color **Sand** Suspender **SS202**  
(Matches style 202)



Color **Indigo** Suspender **SS221**  
(Matches style 221)

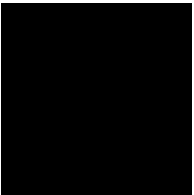


Color **Blue** Suspender **SS302**  
(Matches style 302)



Color **Navy** Suspender **SS372**  
(Matches styles 372 & 371)

MATCHES ACCESSORY COLORS



Color **Black** Suspender **SSBL**



Color **White** Suspender **SSWH**



Color **Coral** Suspender **SSCO**



Color **Blush** Suspender **SSBH**  
(Bellini)



Color **Petal Pink** Suspender **SSPK**



Color **Ferrari Red** Suspender **SSFR**



Color **Apple Red** Suspender **SSAR**



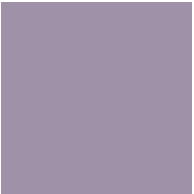
Color **Wine** Suspender **SSWI**



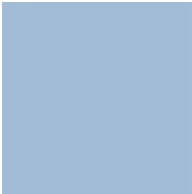
Color **Plum** Suspender **SSPL**



Color **Purple** Suspender **SSPU**



Color **Lavender** Suspender **SSLA**



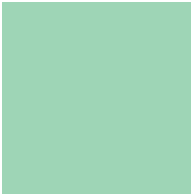
Color **Lite Blue** Suspender **SSLB**



Color **Royal Blue** Suspender **SSRO**



Color **Teal** Suspender **SSTE**



Color **Mint** Suspender **SSMN**





FOR PURCHASE